



Reflow Function

This function enables soldering at the minimum heated air flow without blowing off minute parts such as the 0402 chip. This is optimal for soldering in the narrow pitch mounting.

Rework Function

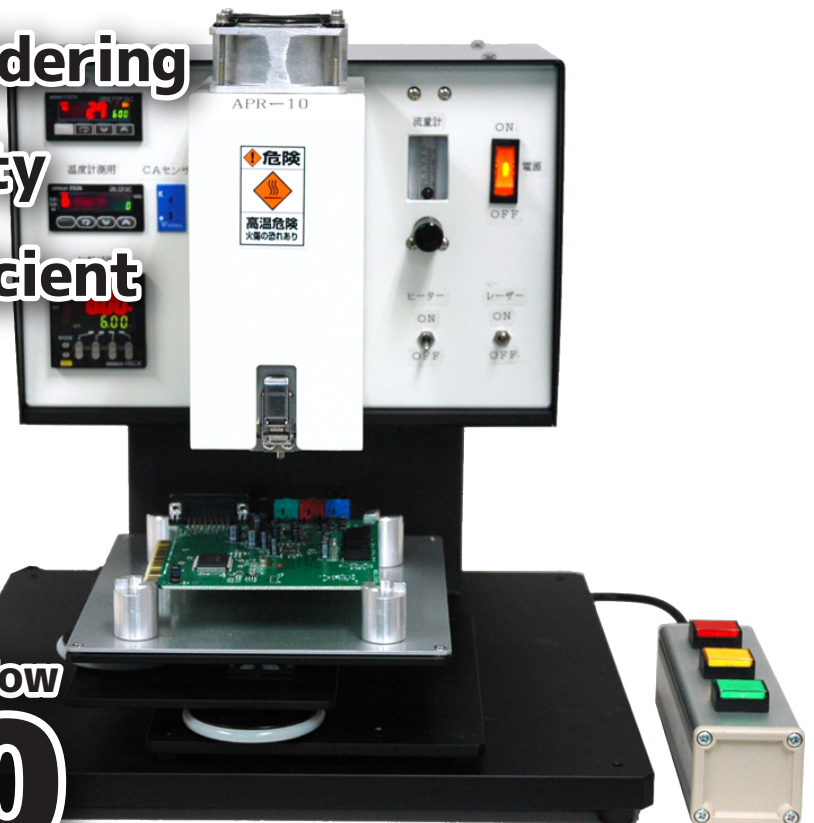
With this function minute parts with a 1005 size chip or less can be removed with ease. This is optimal for narrow pitch mounting repair.



Semi-automatic Soldering
Quality and Stability
No Need to be Proficient
Compact

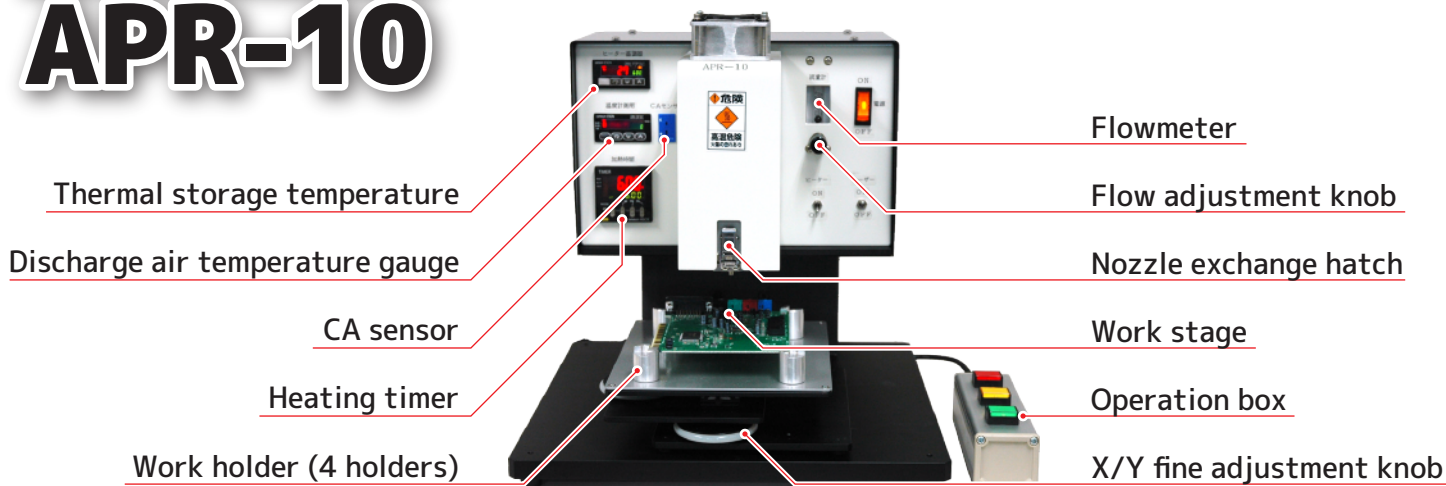
Semi-automatic Point Reflow

APR-10

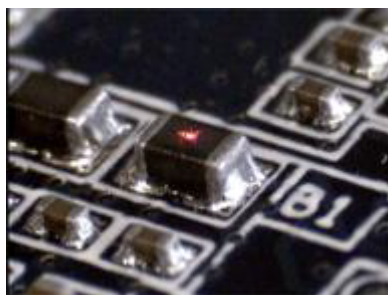


Semi-automatic Point Reflow

APR-10



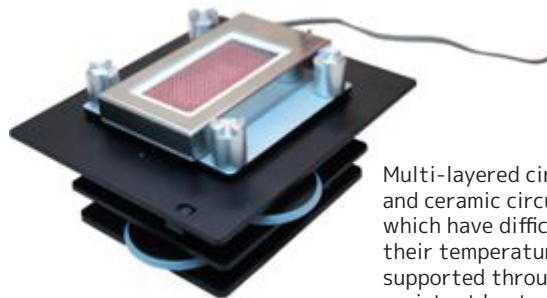
Easy Position Determination



The heating center is guided by light.

The center of the minute parts is accurately determined.

Assistant Heater



Multi-layered circuit boards and ceramic circuit boards which have difficulty in raising their temperature can be supported through using an assistant heater from the bottom.

APR-10 Main body specifications

Item	Specification
Heating method/Maximum heating temperature	Hot air method (250W)/450°C
Standard attachments	1 nozzle (supporting 0402 chip - 1005 chip)/1 CA sensor/1 work stage
Cycle time (depending on the built-in circuit board)	Heating: 4-10[S]
Operation switch	Nozzle up-down/Hot air ON start/Hot air manual stop
Main body size (length x width x height)/ Electric current/ Weight	330 x 330 x 350[mm]/AC 100V 500W/Around 13kg
Heating gas	Atmosphere/N2 (N2 support is an option)
Discharge air pump	Built-in

PWS-20 (XY stage) part

Item	Specification
Target circuit board size	Opening 40-150 x 170[mm]
Circuit board securing method	Magnetic moveable circuit board supporter/Height 22[mm] x 4 supporters
XY moveable parts	Knob operation/Movable stroke (X,Y) = (±30, ±50)[mm]
Stage part size (length x width x height)/Weight	170 x 200 x 55[mm]/Around 2kg

Options

Item	Specification
Bottom heater	100V 100W (temperature setting max is 150°C)
Heating nozzle	For 1608-2125 chip usage/For 3mm opening usage/2-hole type
N2 support	N2 support suction opening

These specifications may change with function improvements. Thank you for your understanding.

OKUHARA

Ideas into ideal

Okuhara Electric Co., Ltd.

2-10 1-chome, Omorinaka, Ota-ku, Tokyo, 143-0014, Japan

TEL:+81-3-3763-2231 E-mail:info@okuhara-elec.com

FAX:+81-3-3768-0568 <http://www.okuhara-elec.com/>

